



© 2020

## THE JUNIPER

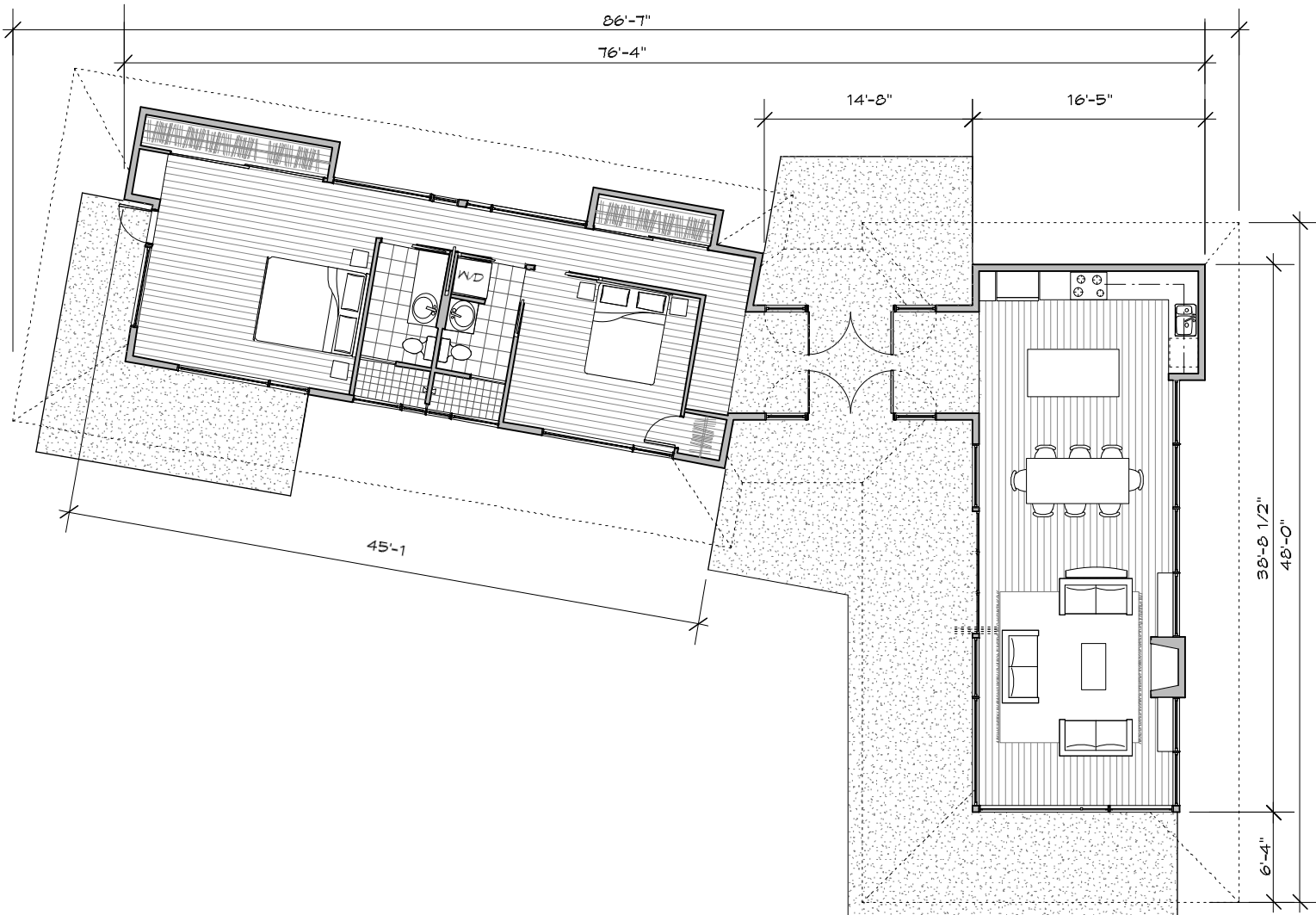
THIS MODERN COTTAGE HAS A VERY COMFORTABLY SIZED FOOTPRINT AND LIVES BIG UNDER AN EXTENDED ROOF LINE. SEPARATED BY THE GENEROUSLY GLAZED ENTRY, THE SPACES ARE DIVIDED IN TWO LONGITUDINAL WINGS FOR MAXIMUM DAYLIGHT AND VIEWS. THE "DAYTIME" WING INCLUDES THE LIVING, DINING AND KITCHEN AREAS. THE OTHER "EVENING" WING CONTAINS THE SLEEPING, BATHS AND LAUNDRY AREAS. THERE IS A GAS FIREPLACE IN THE LIVING ROOM TO KEEP THE COTTAGE COZY ON COOL EVENINGS.

MAIN LEVEL 1,320 SF  
PATIO 865 SF

BEDROOMS 2  
BATHROOMS 2

LIVING ROOM 11'-8" X 17'-0"  
DINING AREA 13'-8" X 11'-0"  
KITCHEN 13'-8" X 10'-0"

MASTER BEDROOM 15'-6" X 14'-6"  
BATH(S) 5'-0" X 11'-0"  
BEDROOM 2 12'-0" X 10'-10"



MAIN FLOOR PLAN



## THE JUNIPER

THIS MODERN COTTAGE HAS A VERY COMFORTABLY SIZED FOOTPRINT AND LIVES BIG UNDER AN EXTENDED ROOF LINE. SEPARATED BY THE GENEROUSLY GLAZED ENTRY, THE SPACES ARE DIVIDED IN TWO LONGITUDINAL WINGS FOR MAXIMUM DAYLIGHT AND VIEWS. THE "DAYTIME" WING INCLUDES THE LIVING, DINING AND KITCHEN AREAS. THE OTHER "EVENING" WING CONTAINS THE SLEEPING, BATHS AND LAUNDRY AREAS. THERE IS A GAS FIREPLACE IN THE LIVING ROOM TO KEEP THE COTTAGE COZY ON COOL EVENINGS.

MAIN LEVEL	1,320 SF
PATIO	865 SF
BEDROOMS	2
BATHROOMS	2

