



THE CHERRY TWO

THE CHERRY TWO IS A VARIATION ON THE ALDER COTTAGES. THE CHERRY TWO IS COMPRISED OF A MAIN BUILDING WITH A GABLE DORMER PRESENTED TO THE FRONT AND REAR YARDS. THE HOUSE ALSO INCLUDES A MASTER BEDROOM WING LOCATED ON THE MAIN FLOOR SEPARATED BY A SHORT LIBRARY OR UTILITY "LINK". THE OUTDOOR SPACE CREATED BY THE "LINK" PROVIDES UNIQUE OPPORTUNITIES FOR COURTYARDS WHICH ARE MORE PRIVATE THAN THE FRONT PORCH. THE ANGLE OF THE WING MAY BE SPLOYED TO ACCOMMODATE THE BEST SOLAR EXPOSURE OR TO SHIELD FROM UNPLEASANT WINDS. THE UPPER FLOOR REMAINS THE SAME AS THE ALDER COTTAGES INCLUDING A TWO BEDROOM SPACE WITH LOFT ABOVE THE BATHROOM CEILING.

MAIN LEVEL 481 + 562 = 1043 SF
 UPPER LEVEL 465 SF
1508 SF

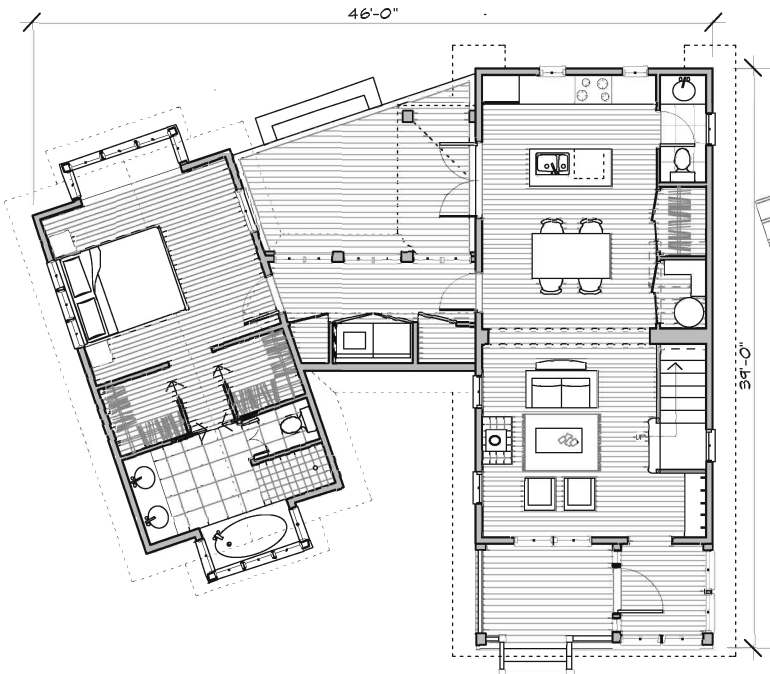
COVERED PORCH 66 SF
 DECK 237 SF

BEDROOMS 3
 BATHROOMS 2 1/2

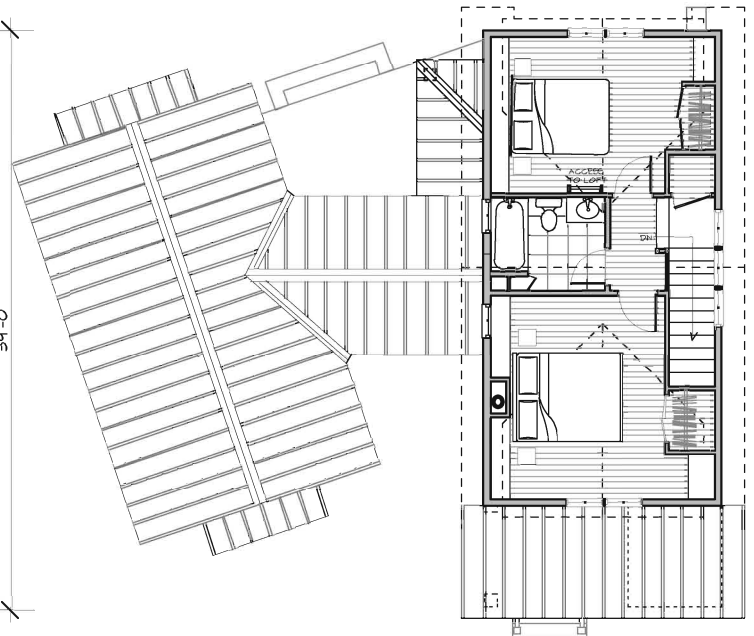
LIVING ROOM 11'-8" x 14'-0"
 DINING AREA 11'-8" x 9'-6"
 KITCHEN 11'-8" x 8'-0"

BEDROOM 1 11'-8" x 13'-8"
 BATH 7'-8" x 8'-6"
 BEDROOM 2 11'-8" x 10'-6"
 LOFT 8'-0" x 6'-7"

M. BEDROOM 13'-0" x 11'-9"
 M. BATH 13'-0" x 9'-0"
 CLOSET HALL 13'-0" x 7'-0"



MAIN FLOOR PLAN



UPPER FLOOR PLAN

0 SCALE 9

perfectlittlehouse.com

206 780 1016

